

TURK EXIM
Export Import Trade Company

Beyond limits



Satellite

Dishes
Installation Materials
Accessories

M120
new



SAB Dishes have a click system which avoids extra screws and nuts that assists the installer by reducing mounting time.



SAB dishes are mounted by only one tool,
easiest mounted dish in the world !



SAB dishes are also offered in mesh option. SAB mesh dishes lasts longer years against strong wind and rain.



S60

SAB S60 DISH
Steel mount





SPECIFICATIONS	REFLECTOR
Type	: Offset
Ofset Angle	: 26°
Reception Frequency	: 10.70 - 12.75 GHz
Antenna Gain (Ku-Band)	: 35 dB - 37dB
Material	: Tri-cation Zinc Phosphated Steel / Aluminum
Finish Coat	: Polyester Powder Coating
Color	: Light Gray (RAL 7035) Anthracite (RAL 7016) Red (RAL 8012)
Small Axis Diameter	: 52 cm
Long Axis Diameter	: 58 cm
Thickness	: 0.6 mm
LNB Holder	: 40 / 60 mm
F/D	: 0.62
Operational Temperature	: -40° + 60°
Operation Wind	: 90 km/H
Survial Wind	: 150 km/H
Weight (average)	: 1,38 kg

SPECIFICATIONS	MOUNT
Type	: Trs 6065
Material	: Galvanized Steel
Finish Coat (Optional)	: Polyester Powder Coating
Color	: Light Gray (RAL 7035) Anthracite (RAL 7016) Red (RAL 8012)
Azimuth Alignment	: 0° - 360°
Elevation Alignment	: 0° - 90°
Weight (complete accessory box)	: 1,45 kg



Pallet Quantity (Semi-Bulk):	240 PCS
Gross Weight	: 721 kg

S65

SAB S65 DISH
Steel mount





SPECIFICATIONS	REFLECTOR
Type	: Offset
Offset Angle	: 26°
Reception Frequency	: 10.70 - 12.75 GHz
Antenna Gain (Ku-Band)	: 35 dB - 37dB
Material	: Tri-cation Zinc Phosphated Steel / Aluminum
Finish Coat	: Polyester Powder Coating
Color	: Light Gray (RAL 7035) Anthracite (RAL 7016) Red (RAL 8012)
Small Axis Diameter	: 60 cm
Long Axis Diameter	: 66 cm
Thickness	: 0.6 mm
LNB Holder	: 40 / 60 mm
F/D	: 0.62
Operational Temperature	: -40° + 60°
Operation Wind	: 90 km/H
Survial Wind	: 150 km/H
Weight (average)	: 1,77 kg

SPECIFICATIONS	MOUNT
Type	: Trs 6065
Material	: Galvanized Steel
Finish Coat (Optional)	: Polyester Powder Coating
Color	: Light Gray (RAL 7035) Anthracite (RAL 7016) Red (RAL 8012)
Azimuth Alignment	: 0° - 360°
Elevation Alignment	: 0° - 90°
Weight (complete accesory box)	: 1,45 kg



Pallet Quantity (Semi-Bulk):	220 PCS
Gross Weight	: 750 kg

S80

SAB S80 DISH
Steel mount





SPECIFICATIONS		REFLECTOR
Type	:	Offset
Offset Angle	:	25.60 °
Reception Frequency	:	10.70 - 12.75 GHz
Antenna Gain (Ku-Band)	:	37 dB - 38dB
Material	:	Tri-cation Zinc Phosphated Steel / Aluminum
Finish Coat	:	Polyester Powder Coating
Color	:	Light Gray (RAL 7035) Anthracite (RAL 7016) Red (RAL 8012)
Small Axis Diameter	:	71 cm
Long Axis Diameter	:	79 cm
Thickness	:	0.6 mm
LNB Holder	:	40 / 60 mm
F/D	:	0.62
Operational Temperature	:	-40° + 60°
Operation Wind	:	90 km/H
Survial Wind	:	150 km/H
Weight (average)	:	2,67 kg

SPECIFICATIONS		MOUNT
Type	:	Trs 80
Material	:	Galvanized Steel
Finish Coat (Optional)	:	Polyester Powder Coating
Color	:	Light Gray (RAL 7035) Anthracite (RAL 7016) Red (RAL 8012)
Azimuth Alignment	:	0° - 360°
Elevation Alignment	:	0° - 90°
Weight (complete accesory box)	:	1,54 kg



Pallet Quantity (Semi-Bulk):	200 PCS
Gross Weight	: 884 kg

S97

SAB S97 DISH
Steel mount





SPECIFICATIONS	REFLECTOR
Type	: Offset
Ofset Angle	: 26.37 °
Reception Frequency	: 10.70 - 12.75 GHz
Antenna Gain (Ku-Band)	: 38,9 dB - 39,8dB
Material	: Tri-cation Zinc Phosphated Steel / Aluminum
Finish Coat	: Polyester Powder Coating
Color	: Light Gray (RAL 7035) Anthracite (RAL 7016) Red (RAL 8012)
Small Axis Diameter	: 87 cm
Long Axis Diameter	: 97 cm
Thickness	: 0.7 mm
LNB Holder	: 40 / 60 mm
F/D	: 0.62
Operational Temperature	: -40° + 60°
Operation Wind	: 90 km/H
Survial Wind	: 150 km/H
Weight (average)	: 4,28 kg

SPECIFICATIONS	MOUNT
Type	: Trs 97
Material	: Galvanized Steel
Finish Coat (Optional)	: Polyester Powder Coating
Color	: Light Gray (RAL 7035) Anthracite (RAL 7016) Red (RAL 8012)
Azimuth Alignment	: 0° - 360°
Elevation Alignment	: 0° - 90°
Weight (complete accesory box)	: 1,82 kg



Pallet Quantity (Semi-Bulk):	150 PCS
Gross Weight	: 970 kg

S120

SAB S120 DISH
Steel mount





SPECIFICATIONS

Type	: Offset
Offset Angle	: 26°
Reception Frequency	: 10.70 - 12.75 GHz
Antenna Gain (Ku-Band) 11.7 GHz	: 42,3 dB
Material	: Tri-cation Zinc Phosphated Steel
Finish Coat	: Polyester Powder Coating
Color	: Anthracite (RAL-7016) Light grey (RAL-7035)
Small Axis Diameter	: 106 cm (108,2)
Long Axis Diameter	: 118,5 cm (120,6)
Thickness	: 0,9 mm
LNB Holder	: 40 mm (60 mm optional)
F/D	: 0.5
Operational Temperature	: -40° + 60°
Operation Wind	: 90 km/H
Survial Wind	: 150 km/H
Weight (average)	: 7,37 kg

REFLECTOR

SPECIFICATIONS

Type	: Trs 120
Material	: 1.20mm Galvanized Steel
Finish Coat (Optional)	: Polyester Powder Coating
Color	: Anthracite (RAL-7016) or Light Gray (RAL-7035)
Mast Diameter	: Ø 34-60
Azimuth Alignment	: 0° - 360°
Elevation Alignment	: 18° - 80°
Weight (complete accesory box)	: 3,30 kg

MOUNT



Pallet Quantity (Semi-Bulk): 100 PCS
Gross Weight : 1115 kg

Y50

SAB Y50 DISH
Steel mount



SPECIFICATIONS	REFLECTOR
Type	: Offset
Ofset Angle	: 26°
Reception Frequency	: 10.70 - 12.75 GHz
Antenna Gain (Ku-Band)	: 37 dB - 38dB
Material	: Tri-cation Zinc Phosphated Steel / Aluminum
Finish Coat	: Polyester Powder Coating
Color	: Light Gray (RAL 7035) Anthracite (RAL 7016) Red (RAL 8012)
Small Axis Diameter	: 46 cm
Long Axis Diameter	: 50 cm
Thickness	: 0.5 mm
LNB Holder	: 40 / 60 mm
F/D	: 0.62
Operational Temperature	: -40° + 60°
Operation Wind	: 90 km/H
Survial Wind	: 150 km/H
Weight (average)	: 0,99 kg

SPECIFICATIONS	MOUNT
Type	: Y1
Material	: Galvanized Steel
Finish Coat (Optional)	: Polyester Powder Coating
Color	: Light Gray (RAL 7035), Anthracite (RAL 7016) Red (RAL 8012)
Azimuth Alignment	: 0° - 360°
Elevation Alignment	: 18° - 70°
Weight (complete accessory box)	: 0,78 kg

Pallet Quantity (Semi-Bulk):	500 PCS
Gross Weight	: 927 kg

M65

SAB M65 DISH
Steel mount



SPECIFICATIONS	REFLECTOR
Type	: Offset
Offset Angle	: 26 °
Reception Frequency	: 10.70 - 12.75 GHz
Antenna Gain (Ku-Band)	: 35 dB - 37dB
Material	: Tri-cation Zinc Phosphated Steel / Aluminum
Finish Coat	: Polyester Powder Coating
Color	: Light Gray (RAL 7035) Anthracite (RAL 7016) Red (RAL 8012)
Small Axis Diameter	: 60 cm
Long Axis Diameter	: 66 cm
LNB Holder	: 40 / 60 mm
F/D	: 0.62
Operational Temperature	: -40° + 60°
Operation Wind	: 90 km/H
Survial Wind	: 150 km/H
Weight (average)	: 1,55 kg

SPECIFICATIONS	MOUNT
Type	: Trs 6080
Material	: Galvanized Steel
Finish Coat (Optional)	: Polyester Powder Coating
Color	: Light Gray (RAL 7035) Anthracite (RAL 7016) Red (RAL 8012)
Azimuth Alignment	: 0° - 360°
Elevation Alignment	: 0° - 90°
Weight (complete accesory box)	: 1,45 kg



Pallet Quantity (Semi-Bulk):	220 PCS
Gross Weight	: 702 kg



M80

SAB M80 DISH
Steel mount



SPECIFICATIONS		REFLECTOR
Type	:	Offset
Offset Angl	:	25.60 °
Reception Frequency	:	10.70 - 12.75 GHz
Antenna Gain (Ku-Band)	:	37 dB - 38dB
Material	:	Tri-cation Zinc Phosphated Steel / Aluminum
Finish Coat	:	Polyester Powder Coating
Color	:	Light Gray (RAL 7035) Anthracite (RAL 7016) Red (RAL 8012)
Small Axis Diameter	:	71 cm
Long Axis Diameter	:	79 cm
LNB Holder	:	40 / 60 mm
F/D	:	0.62
Operational Temperature	:	-40° + 60°
Operation Wind	:	90 km/H
Survial Wind	:	150 km/H
Weight (average)	:	2,45 kg

SPECIFICATIONS		MOUNT
Type	:	Trs 6080
Material	:	Galvanized Steel
Finish Coat (Optional)	:	Polyester Powder Coating
Color	:	Light Gray (RAL 7035), Anthracite (RAL 7016) Red (RAL 8012)
Azimuth Alignment	:	0° - 360°
Elevation Alignment	:	0° - 90°
Weight (complete accesory box)	:	1,54 kg



Pallet Quantity (Semi-Bulk): 200 PCS
Gross Weight : 840 kg



M97

SAB M97 DISH
Steel mount



SPECIFICATIONS	REFLECTOR
Type	: Offset
Ofset Angle	: 26.37°
Reception Frequency	: 10.70 - 12.75 GHz
Antenna Gain (Ku-Band)	: 38,9 dB - 39,8dB
Material	: Tri-cation Zinc Phosphated Steel / Aluminum
Finish Coat	: Polyester Powder Coating
Color	: Light Gray (RAL 7035) Anthracite (RAL 7016) Red (RAL 8012)
Small Axis Diameter	: 87 cm
Long Axis Diameter	: 97 cm
LNB Holder	: 40 mm
F/D	: 0.62
Operational Temperature	: -40° + 60°
Operation Wind	: 90 km/H
Survial Wind	: 150 km/H
Weight (average)	: 3,88 kg

SPECIFICATIONS	MOUNT
Type	: Trs 100
Material	: Galvanized Steel
Finish Coat (Optional)	: Polyester Powder Coating
Color	: Light Gray (RAL 7035) Anthracite (RAL 7016) Red (RAL 8012)
Azimuth Alignment	: 0° - 360°
Elevation Alignment	: 0° - 90°
Weight (complete accessory box)	: 1,82 kg



Pallet Quantity (Semi-Bulk): 150 PCS
Gross Weight : 910 kg



M120

SAB M120 DISH
Steel mount





SPECIFICATIONS	REFLECTOR
Type	: Offset
Offset Angle	: 26 °
Reception Frequency	: 10.70 - 12.75 GHz
Antenna Gain (Ku-Band) 11.7 GHz	: 42,3 dB
Material	: Tri-cation Zinc Phosphated Steel
Finish Coat	: Polyester Powder Coating
Color	: Anthracite (RAL-7016) Light grey (RAL-7035)
Small Axis Diameter	: 106 cm (108,2)
Long Axis Diameter	: 118,5 cm (120,6)
Thickness	: 0,9 mm
LNB Holder	: 40 mm (60 mm optional)
F/D	: 0.5
Operational Temperature	: -40° + 60°
Operation Wind	: 90 km/H
Survial Wind	: 150 km/H
Weight (average)	: 5,70 kg

SPECIFICATIONS	MOUNT
Type	: Trs 120
Material	: 1.20mm Galvanized Steel
Finish Coat (Optional)	: Polyester Powder Coating
Color	: Anthracite (RAL-7016) or Light Gray (RAL-7035)
Mast Diameter	: Ø 34-60
Azimuth Alignment	: 0° - 360°
Elevation Alignment	: 18° - 80°
Weight (complete accesory box)	: 3,30 kg



Pallet Quantity (Semi-Bulk):	100 PCS
Gross Weight	: 948 kg

Installation Materials



L Bracket Aluminum

	Article	Material	Diameter (mm)	Height (mm)	Dist.of Wall (mm)	Plate Size Steel (mm)	
■	L Bracket 25 Alu.	L400	Aluminum	50x2	250	250	150x150x5
■	L Bracket 35 Alu.	L401	Aluminum	50x2	250	350	150x150x5
■	L Bracket 45 Alu.	L402	Aluminum	50x2	250	450	150x150x5



L Bracket HQ Aluminum

	Article	Material	Diameter (mm)	Height (mm)	Dist.of Wall (mm)	Plate Size Steel (mm)	
■	L Bracket 25 Alu.HQ	L400	Aluminum	50x2	250	250	150x150x5
■	L Bracket 35 Alu.HQ	L401	Aluminum	50x2	250	350	150x150x5
■	L Bracket 45 Alu.HQ	L402	Aluminum	50x2	250	450	150x150x5

We can produce all mechanical pieces in electro galvanised, hot dipped or aluminum.

Installation Materials

L Bracket Welded Steel

	Article	Material	Diameter (mm)	Height (mm)	Dist.of Wall (mm)	Plate Size Steel (mm)
L Bracket 25 WH3	L204	Steel	42x1.5	250	250	150x150x2.5
L Bracket 35 WH4	L205	Steel	42x1.5	250	350	150x150x2.5
L Bracket 45 WH5	L206	Steel	42x1.5	250	450	150x150x2.5
L Bracket 55 WH6	L207	Steel	42x1.5	250	550	150x150x2.5

L Bracket Bent Steel

	Article	Material	Diameter (mm)	Height (mm)	Dist.of Wall (mm)	Plate Size Steel (mm)
L Bracket 30	L101	Steel	38x1.5	250	300	150x150x2.5
L Bracket 40	L102	Steel	38x1.5	250	400	150x150x2.5
L Bracket 50	L103	Steel	38x1.5	250	500	150x150x2.5

We can produce all mechanical pieces in electro galvanised, hot dipped or aluminum.



Installation Materials



LT Bracket

	Article	Material	Diameter (mm)	Height (mm)	Dist.of Wall (mm)	Plate Size Steel (mm)	
■	LT Bracket 30	L123	Steel	48x2	250	300	300x270x4
■	LT Bracket 50	L124	Steel	48x2	250	500	300x270x4
■	LT Bracket 70	L125	Steel	48x2	250	700	300x270x4



Balcony

	Article	Material	Diameter (mm)	Height (mm)	Dist.of Wall (mm)	Plate Size Steel (mm)	
■	BH 25	L211	Steel	42x1.5	250	250	150x150x2.5
■	BH 35	L212	Steel	42x1.5	250	350	150x150x2.5
■	BH 45	L213	Steel	42x1.5	250	450	150x150x2.5
■	BH 55	L214	Steel	42x1.5	250	550	150x150x2.5

We can produce all mechanical pieces in electro galvanised, hot dipped or aluminum.

Installation Materials



M Bracket

	Article	Material	Height (mm)	Size (mm)
M Bracket 10 cm	M106	Steel	100 mm	30x5
M Bracket 18 cm	M107	Steel	180 mm	30x5
M Bracket 28 cm	M108	Steel	280 mm	30x5
M Bracket 38 cm	M109	Steel	380 mm	30x5
M Bracket 48 cm	M110	Steel	480 mm	30x5

Bracket

	Article	Material	Diameter (mm)	Height (mm)	Plate Size Steel (mm)
	YK15100	Steel	48x2	1000	150x150
	YK1575	Steel	48x2	750	150x150

We can produce all mechanical pieces in electro galvanised, hot dipped or aluminum.

Installation Materials

Balcony Bracket

Article	Material	Diameter (mm)	Height (mm)	Plate Size (mm)
L215	Steel	42x1.5	500	100x100x4
L216	Steel	42x1.5	750	100x100x4
Y1585	Steel	48x1.5	850	150x150x3
Y2085	Steel	48x1.5	850	200x200x3



L215

L216

Y1585

Y2085



LG Bracket

Article (mm)	Material (mm)	Diameter (mm)	Height (mm)
LG001	Steel	38x1.5	500
LG002	Steel	38x1.5	600
LG003	Steel	42x1.5	700



We can produce all mechanical pieces in electro galvanized, hot dipped or aluminum.

Accessories

LNB HOLDER

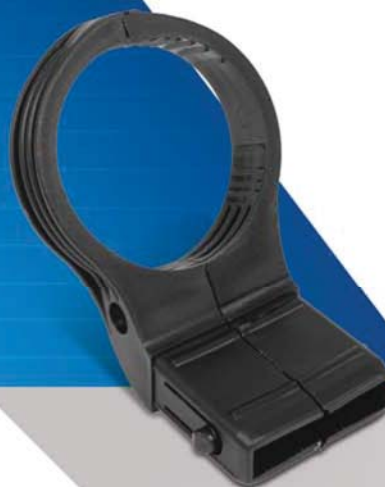


**CLICK
SYSTEM**



**A026
Single LNB Holder**

Single Lnb holder for
Sab dishes 40 mm



**A027
Single LNB Holder**

Single Lnb holder for
Sab dishes 60 mm



**CLICK
SYSTEM**



**MFTS2
Multiblock
2 LNB Holder**



**MFTS3
Multiblock
3 LNB Holder**



**MFTS4
Multiblock
4 LNB Holder**

We can produce all mechanical pieces in electro galvanised, hot dipped or aluminum.



MFU2
Multi Feed Universal
2 LNB Holder



MFU3
Multi Feed Universal
3 LNB Holder



MFU4
Multi Feed Universal
4 LNB Holder



A024
Universal 2 LNB Holder



A025
Universal 3 LNB Holder

We can produce all mechanical pieces in electro galvanised, hot dipped or aluminum.

Accessories



Multi Feed LNB Holders

MFA

Article Material

MFA4 Steel

MFA3 Steel

MFA3 Steel

For universal dishes



Screw Set

- 4 pcs screw
- 4 pcs dowel
- 4 pcs washer



Screw Set High Quality

- 4 pcs screw
- 4 pcs dowel
- 4 pcs washer

Screw set in better quality



We can produce all mechanical pieces in electro galvanised, hot dipped or aluminum.

Accessories



K102
"U" Clips

Material : Steel



K103
"V" Clips

Material : Steel



K104
Balcony Clips

Material : Steel

We can produce all mechanical pieces in electro galvanised, hot dipped or aluminum.



TURKEXIM
Export Import Trade Company

+90 332 233 06 06

info@turkexim.com.tr -www.turkexim.com.tr

Niřantař Mh. Dr. Hulusi Baybal Cd.

No:10/504 Selçuklu/KONYA/TURKEY